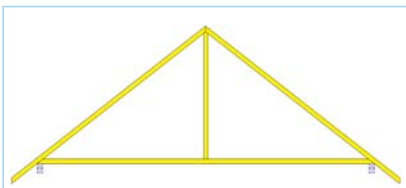
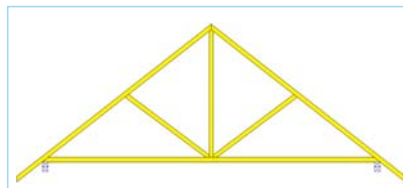


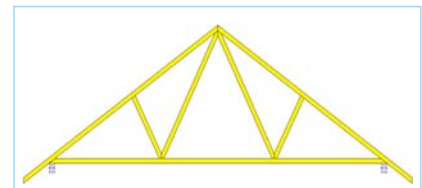
EXAMPLES OF BASIC TRUSSED RAFTER PROFILES



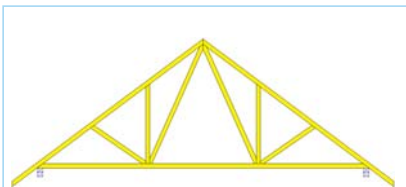
King Post



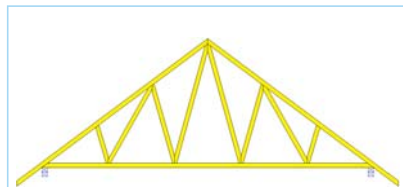
Queen Post



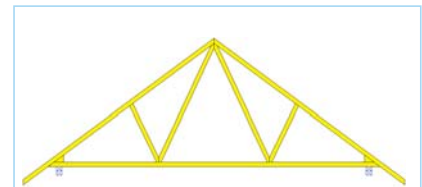
Fink



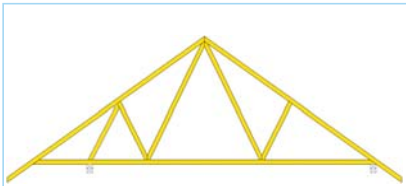
Fan



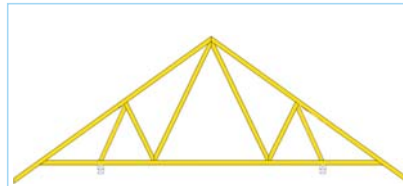
Double 'W'



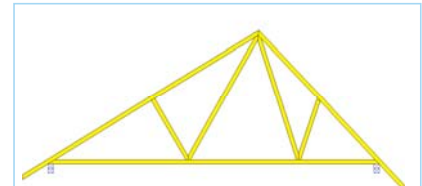
Small Cantilever



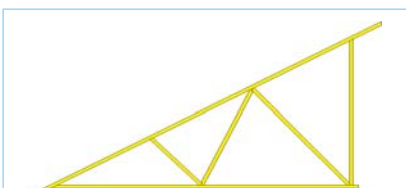
Large Single Cantilever



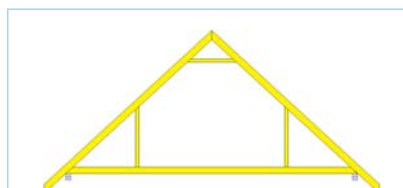
Large Double Cantilever



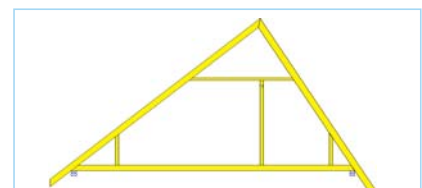
Assymetric



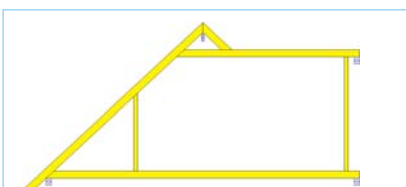
Monopitch



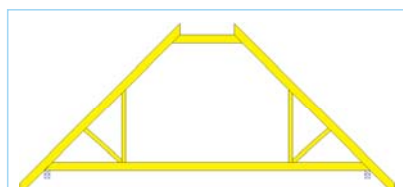
'Room in Roof'



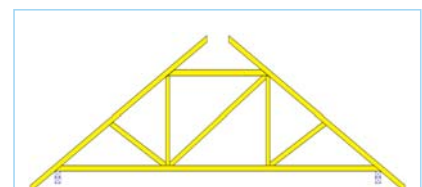
Assymetric 'Room in Roof'



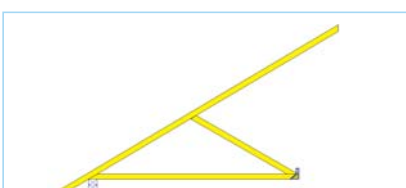
Dormer 'Room in Roof'



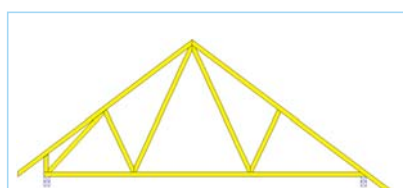
Flat-top 'Room in Roof'



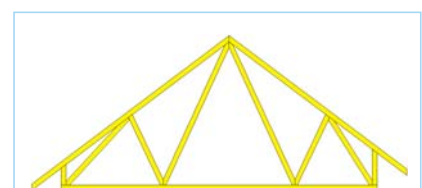
Hip End



Open Jack



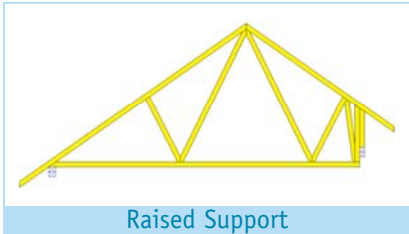
Bobtail/Stub



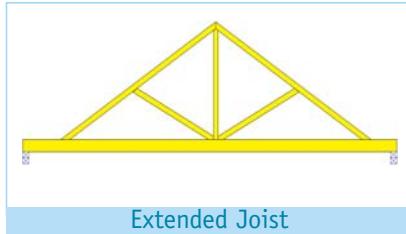
Double Bobtail/Stub



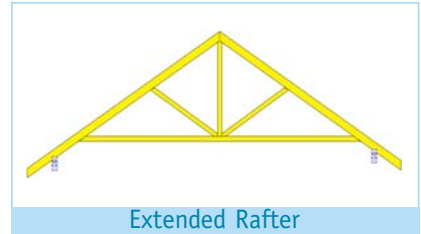
AND MORE COMPLEX TRUSSED RAFTER PROFILES



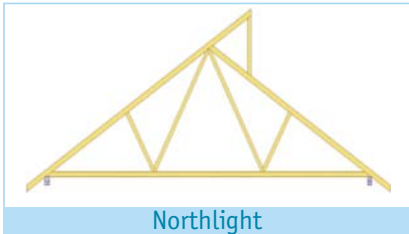
Raised Support



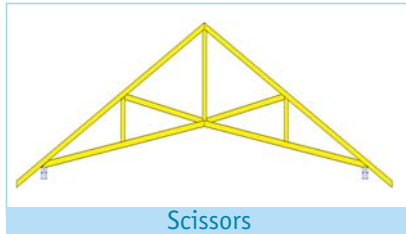
Extended Joist



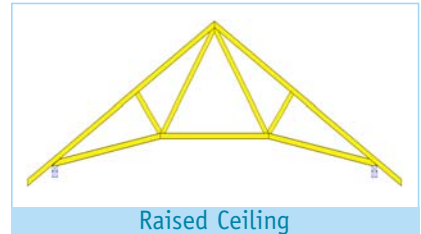
Extended Rafter



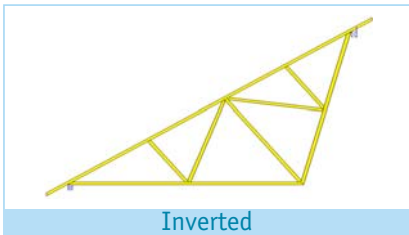
Northlight



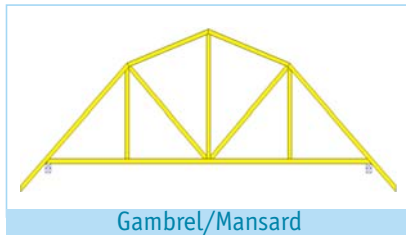
Scissors



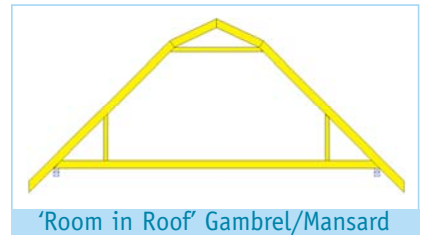
Raised Ceiling



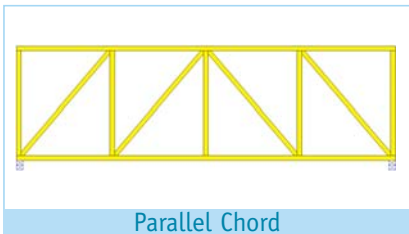
Inverted



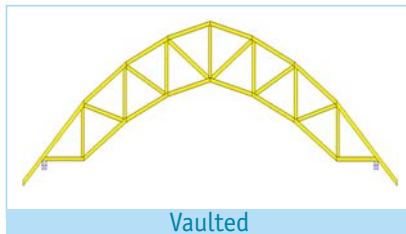
Gambrel/Mansard



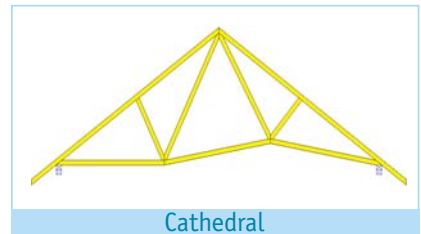
'Room in Roof' Gambrel/Mansard



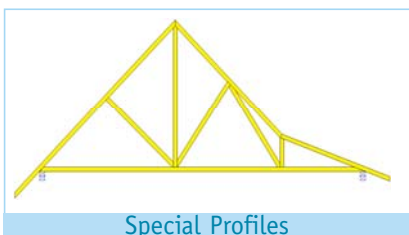
Parallel Chord



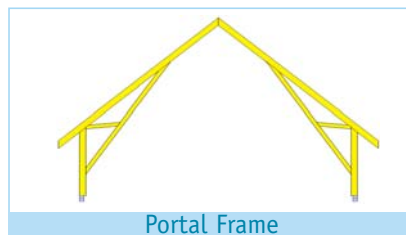
Vaulted



Cathedral



Special Profiles



Portal Frame

This information sheet gives an idea of some configurations available using trussed rafter technology. The configurations shown are not intended to be solutions to specific design requirements and some types may be unsuitable for certain span conditions. However, they are intended to show the flexibility of the system but readers are advised to discuss their particular design situations with their specialist trussed rafter supplier. The guidelines contained within this information sheet are given in good faith but without liability and its use shall be entirely at the risk of the user.

